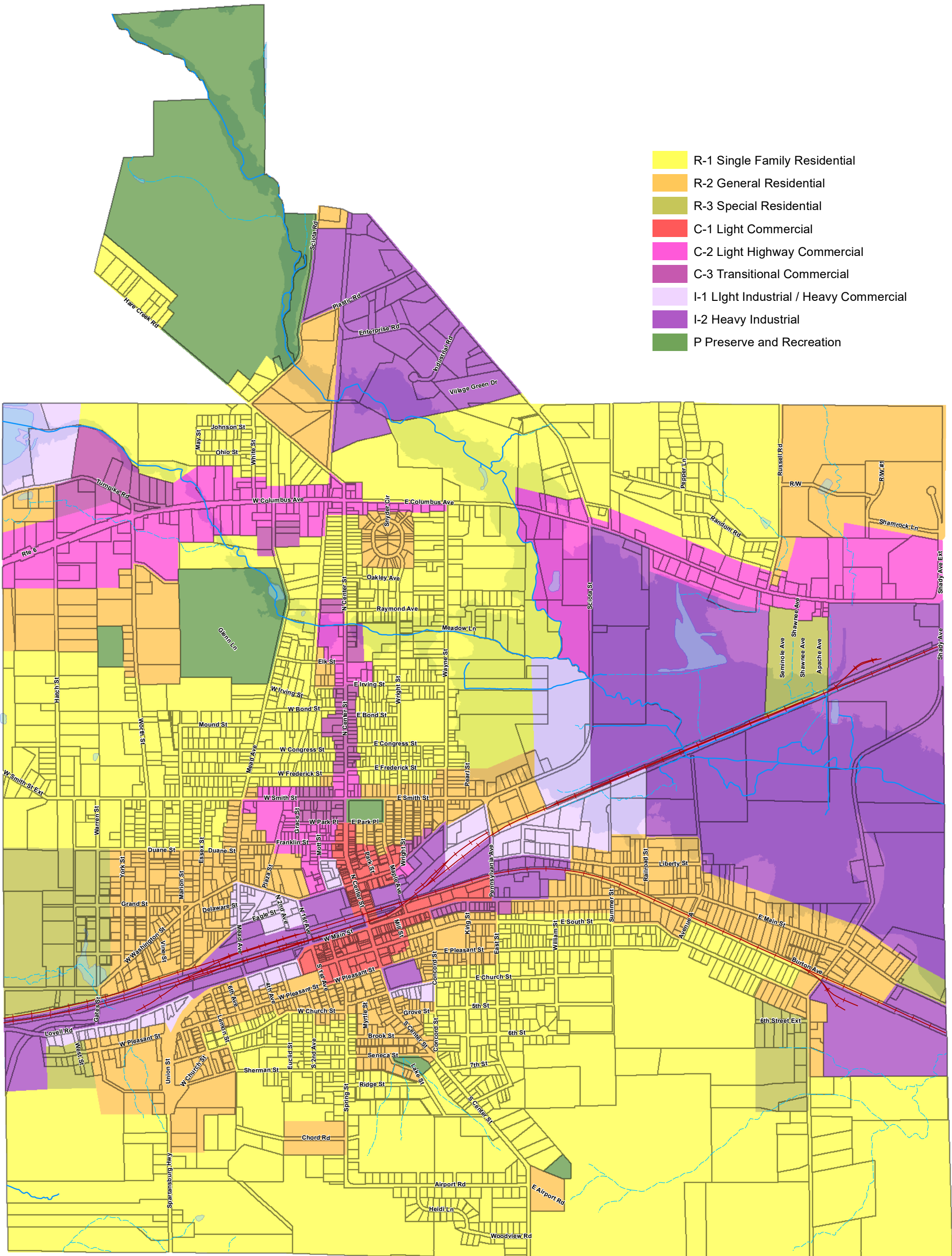


City of Corry Zoning

- R-1 Single Family Residential
- R-2 General Residential
- R-3 Special Residential
- C-1 Light Commercial
- C-2 Light Highway Commercial
- C-3 Transitional Commercial
- I-1 Light Industrial / Heavy Commercial
- I-2 Heavy Industrial
- P Preserve and Recreation



2023 Erie County Department of Planning and Community Development

Adopted: 3/18/1991
Amended: 5/7/2012